

District Owned Tracts:

Open Space: Tracts A, B, C, D, F, G, I, and J

Open Space/Drainage: Tracts E, H, K, N, P, Q, R, V, W, and X

Parks: Tracts: L and O

Clubhouse/Open Space : Tract Y

Trail Head/Open Space: Tract S



Tracts owned, operated, and maintained by Stone Creek MD

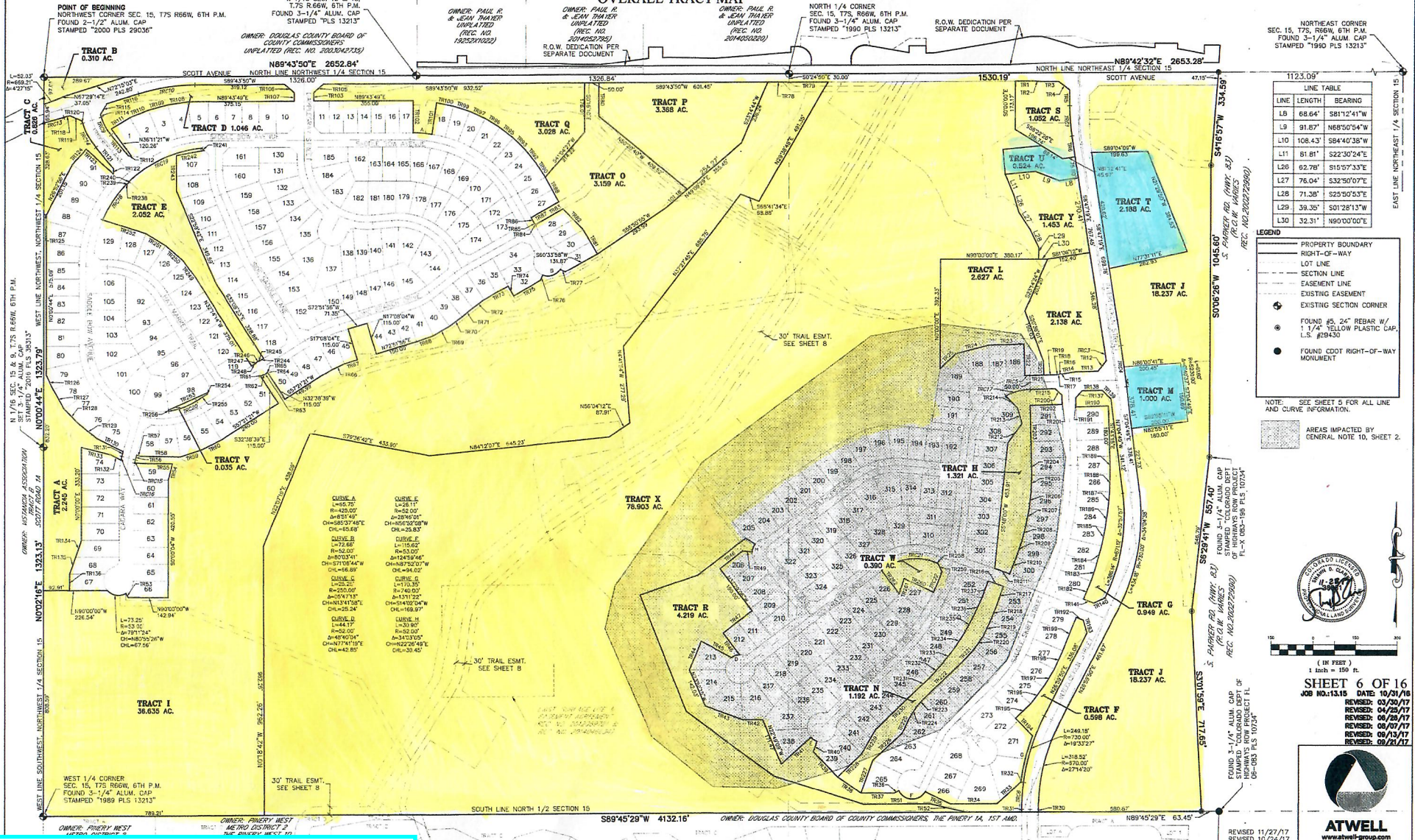


Privately owned tracts--District does not operate or maintain

STONE CREEK RANCH FILING NO. 1 PLANNING AREAS 1-7 FINAL PLAT

A REPLAT OF LOTS 1 AND 2, SZYMANSKI NUMBER 2 AND A PART OF THE NORTH HALF OF SECTION 15,
TOWNSHIP 7 SOUTH, RANGE 66 WEST OF THE SIXTH PRINCIPAL MERIDIAN, COUNTY OF DOUGLAS, STATE OF COLORADO
251.681 ACRES - 329 RESIDENTIAL LOTS - 25 TRACTS - SB2014-080

OVERALL TRACT MAP



NORTHEAST CORNER
SEC. 15, T7S, R66W, 6TH P.M.
FOUND 3-1/4" ALUM. CAP
STAMPED "1989 PLS 13213"

LINE TABLE

LINE	LENGTH	BEARING
L8	68.64'	S81°12'41"W
L9	91.87'	N68°50'54"W
L10	108.43'	S84°40'38"W
L11	81.81'	S22°30'24"E
L28	62.78'	S15°07'33"E
L27	76.04'	S32°50'07"E
L28	71.38'	S25°50'53"E
L29	39.35'	S01°28'13"W
L30	32.31'	N90°03'00"E

- LEGEND
- PROPERTY BOUNDARY
 - RIGHT-OF-WAY
 - LOT LINE
 - SECTION LINE
 - EASEMENT LINE
 - EXISTING EASEMENT
 - EXISTING SECTION CORNER
 - FOUND #5, 24" REBAR W/ 1 1/4" YELLOW PLASTIC CAP, L.S. #28430
 - FOUND CDDT RIGHT-OF-WAY MONUMENT

NOTE: SEE SHEET 5 FOR ALL LINE AND CURVE INFORMATION.

AREAS IMPACTED BY GENERAL NOTE 10, SHEET 2.

1" = 150' FT.
SHEET 6 OF 16
JOB NO. 13.15 DATE: 10/31/16
REVISED: 03/30/17
REVISED: 04/25/17
REVISED: 06/28/17
REVISED: 08/07/17
REVISED: 08/13/17
REVISED: 08/21/17

Privately Owned Tracts:

Homestead House/Open Space: Tract M (Owned by CCI)

Ranch House/Open Space: Tract T (Private owner)

Barn Facility/Open Space: Tract U (Owned by CCI)



ATWELL
www.atwell-group.com

REVISED 11/27/17
REVISED 10/24/17