

**SPECIAL DISTRICT PUBLIC DISCLOSURE DOCUMENT**

**STONE CREEK METROPOLITAN DISTRICT**

As required pursuant to Section 32-1-104.8 of the Colorado Revised Statutes (“C.R.S.”), this Public Disclosure Document has been prepared by Stone Creek Metropolitan District (the “District”) to provide information regarding the District.

**DISTRICT’S POWERS**

The powers of the District as authorized by Section 32-1-1004, C.R.S. and under its Service Plan, as approved by the Board of County Commissioners of Douglas County, Colorado (the County”) on September 23, 2014 (the “Service Plan”), are to provide for the acquisition, construction, installation, and completion of certain water, street, safety protection, park and recreation, mosquito control, storm sewer, sanitation, and wastewater treatment improvements, as well as covenant enforcement, design review, and security services for the District.

**DISTRICT’S SERVICE PLAN**

The District’s Service Plan, which can be amended from time to time, includes a description of the District’s powers and authority. A copy of the District’s Service Plan is available from the Division of Local Government in the State Department of Local Affairs (“Division”).

The Stone Creek Metropolitan District is authorized by Title 32 of the Colorado Revised Statutes to use a number of methods to raise revenues for capital needs and general operations costs. These methods, subject to the limitations imposed by Section 20 of Article X of the Colorado Constitution (“TABOR”), include issuing debt, levying taxes, and imposing fees and charges. Information concerning District directors, management, meetings, elections, and current taxes are provided annually in the Notice to Electors described in Section 32-1-809(1), C.R.S., which can be found at the District office, on the District’s website, on file at the Division, or on file at the office of the Clerk and Recorder of Douglas County.

**DISTRICT MAP**

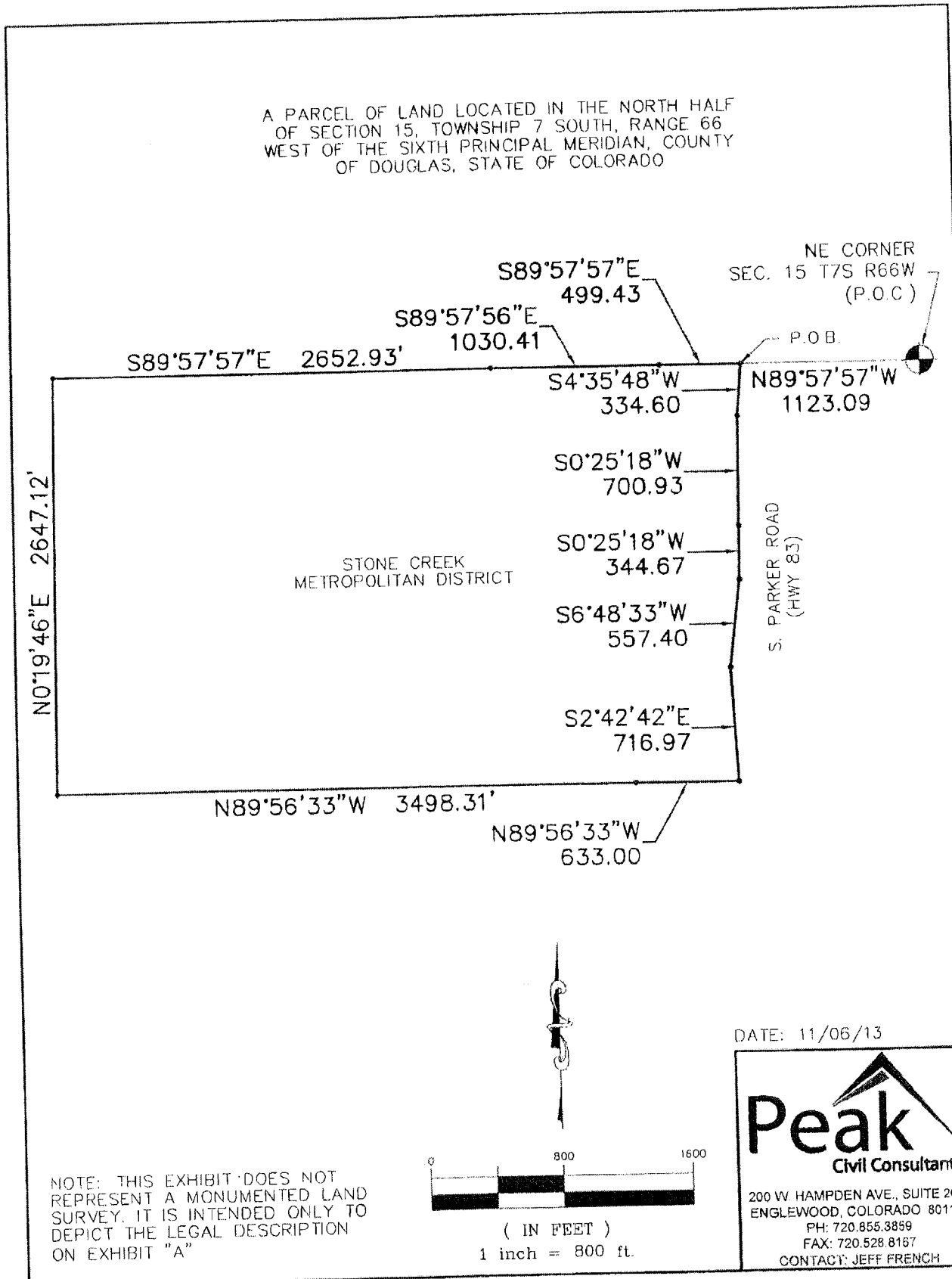
A map of the District’s boundaries is attached hereto as Exhibit A.

Dated this 23<sup>rd</sup> day of December, 2014.

**EXHIBIT A**

**District Map**

A PARCEL OF LAND LOCATED IN THE NORTH HALF  
OF SECTION 15, TOWNSHIP 7 SOUTH, RANGE 66  
WEST OF THE SIXTH PRINCIPAL MERIDIAN, COUNTY  
OF DOUGLAS, STATE OF COLORADO



NE CORNER  
SEC. 15 T7S R66W  
(P.O.C.)

P.O.B.

STONE CREEK  
METROPOLITAN DISTRICT

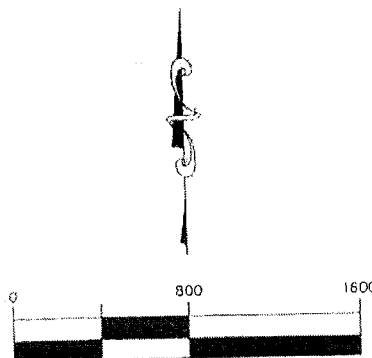
S. PARKER ROAD  
(HWY 83)

DATE: 11/06/13



200 W. HAMPDEN AVE., SUITE 200  
ENGLEWOOD, COLORADO 80110  
PH: 720.855.3899  
FAX: 720.528.8167  
CONTACT: JEFF FRENCH

NOTE: THIS EXHIBIT DOES NOT  
REPRESENT A MONUMENTED LAND  
SURVEY. IT IS INTENDED ONLY TO  
DEPICT THE LEGAL DESCRIPTION  
ON EXHIBIT "A"



( IN FEET )  
1 inch = 800 ft.